



MONTHLY PETROLEUM INFORMATION

2011 April Statistical

Highlights

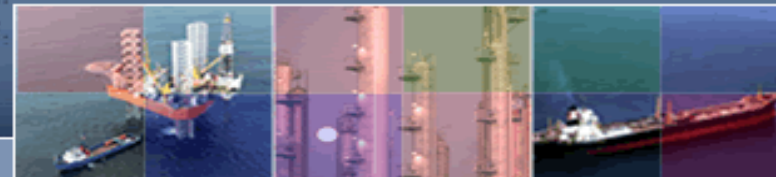
*For further enquires and comments, please contact us at:
Website: www.nnpcgroup.com*

CORPORATE PLANNING & STRATEGY (CP&S)



Nigerian National Petroleum Corporation

We touch your lives in many positive ways...



Disclaimer

This publication presents information on the oil and gas industry. Its content reflects individual as well as general analysis and trend of activities that characterized the industry within the country. Although NNPC endeavours to ensure accuracy of information in these documents, it cannot guarantee 100% accuracy nor can it be held liable for errors that may occur. Users are to note that use of any information herein is purely at their discretion.





SUMMARY

Table i - Fiscalised Crude Oil Production by Company

1.0 EXPLORATION/DRILLING ACTIVITIES

Only Pan Ocean, Addax, SPDC, Chevron and Total E&P carried out exploration/drilling activities this month. Drilling was carried out on 11 wells.

2.0 CRUDE OIL AND CONDENSATE

2.1 Production: Data on non-fiscalised production from several companies was not available. Consequently, the total figure of 33.51 million barrels can not be exactly the total quantity of non-fiscalised production.

Total fiscalised production for the month was 72.53 million barrels representing 2.42 million barrels per day. This is 2.18% lower than the March production of 70.99 million barrels or 2.29 million barrels per day.

2.2 Lifting (Domestic and Export)

Total crude oil and condensates lifting for both domestic and export was about 70.91 million barrels. Oil companies lifted 39.19 million barrels (55%), while NNPC lifted 31.72 million barrels (45%).

Lifting by fiscal regime shows 47.72 million barrels for JVC, 20.23 million barrels for PSC/SC and 2.96 million barrels for others regimes. Out of NNPC's liftings, 22.79 million barrels was for Federation Account, while 8.94 million barrels was for domestic use. These are shown in Table ii and the corresponding chart on the next page. Individual company liftings are also shown in Table 4.0

COMPANY	CRUDE OIL PRODUCTION		DAILY AVERAGE (BARREL)	% OF TOTAL PRODUCTION
	bbbls	m3		
JOINT VENTURE COMPANIES:				
BPDC	12,925,412.00	2,054,972.48	430,847.07	17.82
MOBIL	5,059,339.00	804,369.13	168,644.63	6.99
CHEVRON	8,275,531.00	1,315,701.85	275,851.03	11.44
ELF	2,374,314.00	377,485.06	79,143.80	3.27
NAOC/PHILLIPS	2,917,571.00	463,855.86	97,252.37	4.02
TEXACO	320,299.00	50,923.38	10,676.63	0.44
PAN - OCEAN	387,097.00	61,543.39	12,903.23	0.53
SUB TOTAL	32,259,563.00	5,128,851.14	1,075,318.77	44.46
RF-JV				
BPDC	2,024,243.00	321,828.32	67,474.77	2.79
MOBIL	8,878,470.00	1,411,561.31	295,949.00	12.24
CHEVRON	2,051,115.00	326,100.62	68,370.50	2.83
TOTAL E & P	1,908,381.00	303,407.77	63,612.70	2.63
NAOC/PHILLIPS	0.00	-	-	0.00
TEXACO	0.00	-	-	0.00
PAN - OCEAN	0.00	-	-	0.00
SUB TOTAL	14,862,209.00	2,362,898.02	495,406.97	20.49
PROD. SHARING COMPANIES				
CHEVRON	7,486,864.00	1,190,314.05	249,562.13	10.32
ADDAX	2,321,780.00	369,132.84	77,392.67	3.20
ESSO EXP. & PRO. NIG LTD	4,140,421.00	658,273.11	138,014.03	5.71
NAE	864,672.00	137,471.61	28,822.40	1.19
SNPCO	2,378,680.00	378,179.20	79,289.33	3.28
SA PET/TOTAL UPSTREAM	-	-	-	-
NIGERIA	3,622,076.00	575,863.00	120,735.87	4.99
SUB TOTAL	20,814,493.00	3,309,233.80	693,816.43	28.70
SERVICE CONTRACT:				
ENR	230,337.00	36,620.59	7,677.90	0.32
SUB TOTAL	230,337.00	36,620.59	7,677.90	0.32
INDEPENDENTS/SOLE RISK:				
NPDC OKONO	1,538,454.00	244,594.19	51,281.80	2.12
NPDC	224,028.00	35,617.54	7,467.60	0.31
NPDC-SEPLAT JV	455,849.00	72,474.06	15,194.97	0.63
SEPLAT	372,967.00	59,296.90	12,432.23	0.51
CONSOLIDATED	54,055.00	8,594.04	1,801.83	0.07
EXPRESS PETROLEUM	0.00	-	-	0.00
AMNI	353,927.00	56,269.79	11,797.57	0.49
CAVENDISH PETROLEUM	0.00	-	-	0.00
ATLAS	0.00	-	-	0.00
CONTINENTAL OIL	585,578.00	93,099.29	19,519.27	0.81
MONI PULO	168,785.00	26,834.62	5,626.17	0.23
DUBRI	10,907.00	1,734.07	363.57	0.02
NIG AGIP EXPL/ALLIED/CAMAC	133,658.00	21,249.88	4,455.27	0.18
SUB TOTAL	3,898,208.00	619,764.40	129,940.27	5.37
MARGINAL FIELDS				
NIGER DELTA PET. RES.	82,990.00	13,194.33	2,766.33	0.11
PLATFORM PETROLEUM	25,947.00	4,125.24	864.90	0.04
MIDWESTERN OIL	235,256.00	37,402.65	7,841.87	0.32
WALTER SMITH	44,436.00	7,064.75	1,481.20	0.06
PILLAR OIL	0.00	-	-	0.00
MOVIDO E&P NIGERIA LTD	0.00	-	-	0.00
ENERGIA LTD	49,594.00	7,884.80	1,653.13	0.07
BRITANNIA U	28,133.00	4,472.78	937.77	0.04
SUB TOTAL	466,356.00	74,144.54	15,545.20	0.64
GRAND TOTAL	72,531,166.00	11,531,512.49	2,417,705.53	100.00

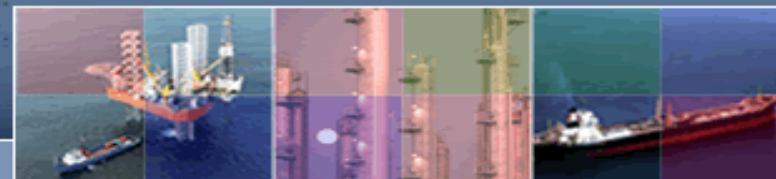
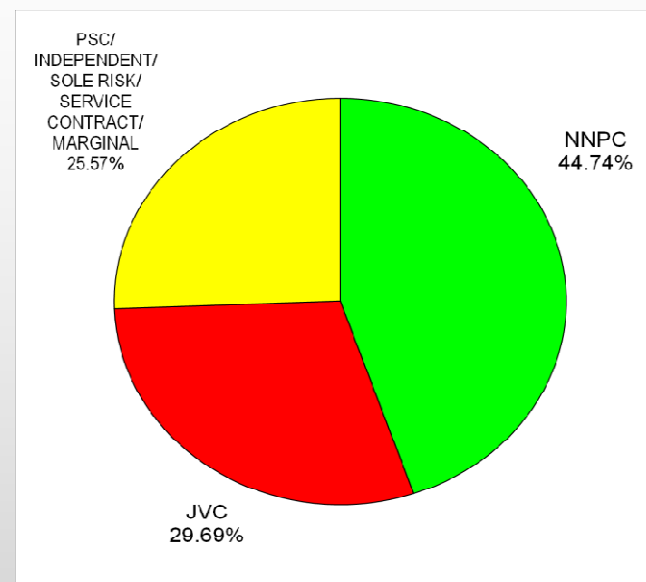


Table ii - (CRUDE OIL LIFTING)

REGIME \ BY	COMPANY	NNPC			TOTAL
		EXPORT	DOMESTIC	NNPC TOTAL	
JVC	21,053,562.00	17,732,777.00	8,935,483.00	26,668,260.00	47,721,822.00
PSC/SC	15,170,676.00	5,055,485.00	0.00	5,055,485.00	20,226,161.00
INDEPENDENT/MARGINAL	2,964,239.00	0.00	0.00	0.00	2,964,239.00
TOTAL	39,188,477.00	22,788,262.00	8,935,483.00	31,723,745.00	70,912,222.00

*Crude Oil total Lifting excludes 3,958,012, 949,518, 4,746,508 & 1,899,837 for FIRS, MCA (Escrow Acct), PPMC Crude Exchange & PPMC Offshore Cargo Liftings respec

*Crude Oil total Lifting for FIRS, MCA (Escrow Acct), PPMC Crude Exchange & PPMC Offshore Cargo Liftings does not enter Federation Account.



Crude Oil Liftings

2.3 Lifting (Alternative Funding):

AF lifting was about 11.01 million barrels. NNPC lifted 4.25 million barrels (38.63 %) while four companies (Shell, Chevron, Mobil and Total E & P) lifted 6.76 million barrels (61.37 %). Liftings by Companies are part of the JVCs export while the lifting by NNPC adds to the Federation account lifting. Table iii on the next page gives further breakdown.

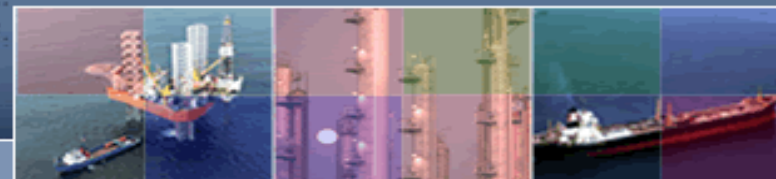
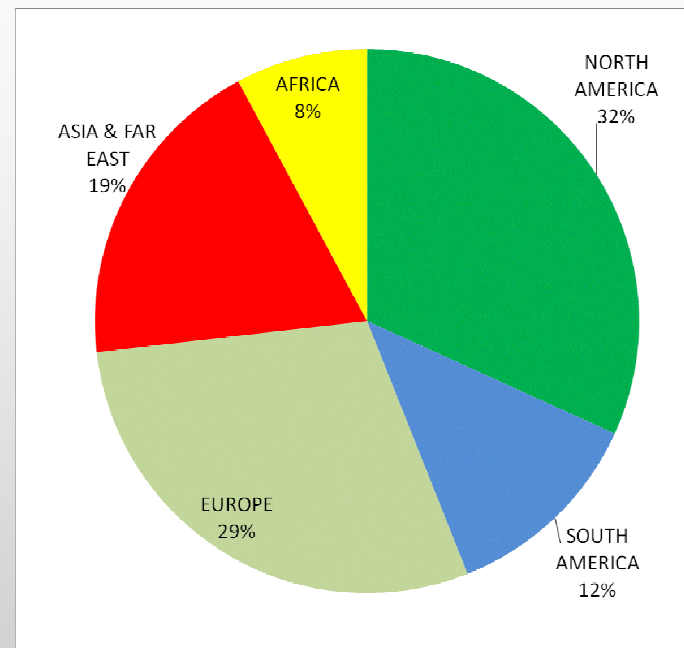


Table ii - (Alternative Funding Crude Lifting)

CRUDE	BENEFICIARY	QUANTITY (BBLs)	PERCENTAGE SHARE
EA	SPDC	1,856,255.00	66.18
	NNPC	948,646.00	33.82
	Sub-Total	2,804,901.00	100.00
YOHO/QIL	Mobil	3,551,388.00	57.69
	NNPC	2,604,600.00	42.31
	Sub-Total	6,155,988	100
AMENAM	Total E&P	1,348,901.00	65.85
	NNPC	699,629.00	34.15
	Sub-Total	2,048,530	100
ESCRAVOS	Chevron	0.00	#DIV/0!
	NNPC	0.00	#DIV/0!
	Sub-Total	0	#DIV/0!
	Total Companies	6,756,544	61.37
	Total NNPC	4,252,875	38.63
	Grand Total	11,009,419	100



Crude Oil Export By Destination

2.4 Crude Oil Export By Destination:

Five regions namely; North America, Europe, Africa, South America, and Asia remain the major destinations of Nigerian crude and condensate export. Table 5 and the figure above provide further insight.





3.1 Natural Gas Production and Utilization:

April 2011 total Production of natural gas is 131.56 BSCF. This is lower than the march figure of 161.07 BSCF by 29.5 BSCF. About 18.74% of the total production was flared. The rest was utilized as shown in Table iii below. Table 6 gives further details of gas activities during the month.

3.2 Natural Gas Liquid (NGL) Inventory:

Data on NGL production is not available at the time of this report. (Table 7.0).

Table iv - (GAS PRODUCED, UTILISED AND FLARED) (mscf)

COMPANY	GAS PRODUCED	TOTAL GAS UTILISED	GAS FLARED	% FLARED BY COMPANY
JV:				
SPDC	76,600,834.53	69,649,326.63	6,951,507.90	9.07
MOBIL	0.00	0.00	0.00	-
CHEVRON	21,985,777.00	13,708,554.00	8,277,223.00	37.65
TOTAL E&P	23,543,129.16	21,107,017.20	2,436,111.96	10.35
NAOC	-	-	-	-
TEXACO	581,967.00	4,935.00	577,032.00	99.15
PAN-OCEAN	980,269.00	918,711.00	61,558.00	6.28
SUB - TOTAL	123,691,976.69	105,388,543.83	18,303,432.86	14.80
PRODUCTION SHARING COMPANY				
ADDAX	7,128,759.00	1,517,899.00	5,610,860.00	78.71
ESSO	-	-	-	-
SUB - TOTAL	7,128,759.00	1,517,899.00	5,610,860.00	78.71
SERVICE CONTRACT				
AENR	741,780.00	5,700.00	736,080.00	99.23
SUB - TOTAL	741,780.00	5,700.00	736,080.00	99.23
SOLE RISK/INDEPENDENTS:				
NPDC	-	-	-	-
SUB - TOTAL	-	-	-	-
GRAND-TOTAL	131,562,515.69	106,912,142.83	24,650,372.86	18.74

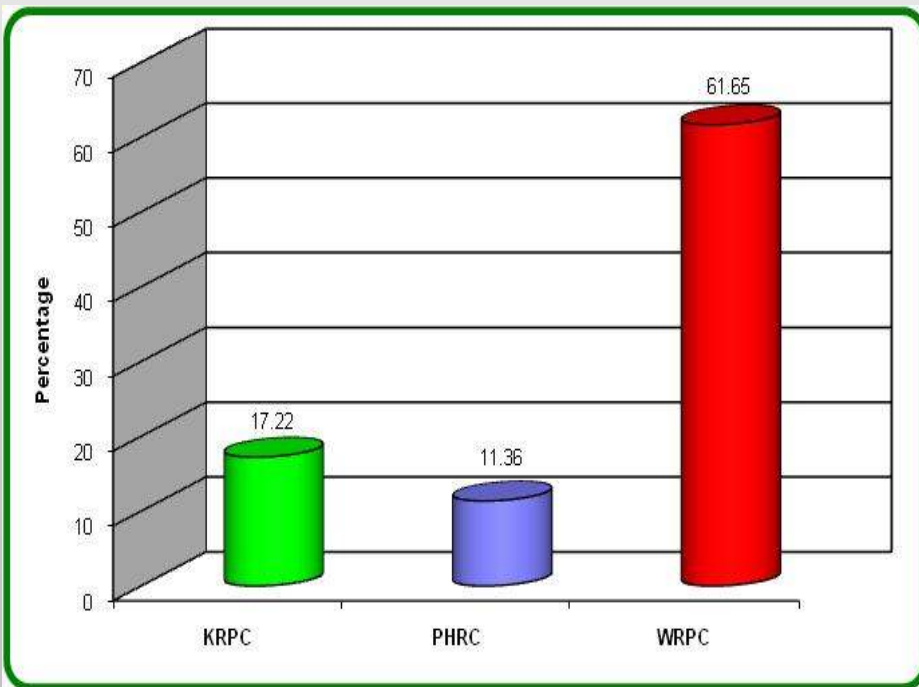
No Report from MOBIL, NAOC, NPDC & ESSO at the time of this publication



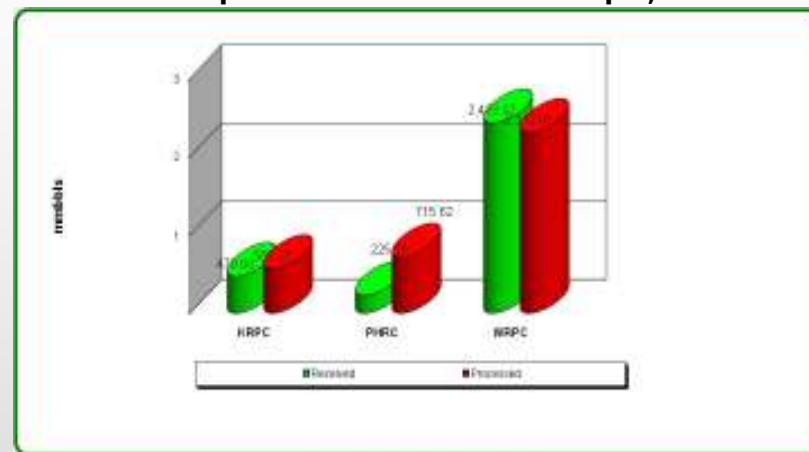
4.0 REFINERY OPERATIONS

4.1 Crude Oil Balance: This month, 426 thousand mt of dry Crude Oil, Condensate and Slop was received by the three Refineries, KRPC, PHRC and WRPC. With an opening stock of 576 thousand mt, total Crude Oil available for processing was 1,002 thousand mt, out of which 488 thousand mt was processed. The respective average capacity utilization during the month was 17.22%, 11.36% and 61.65% for KRPC, PHRC and WRPC respectively. Details are shown in the charts below:

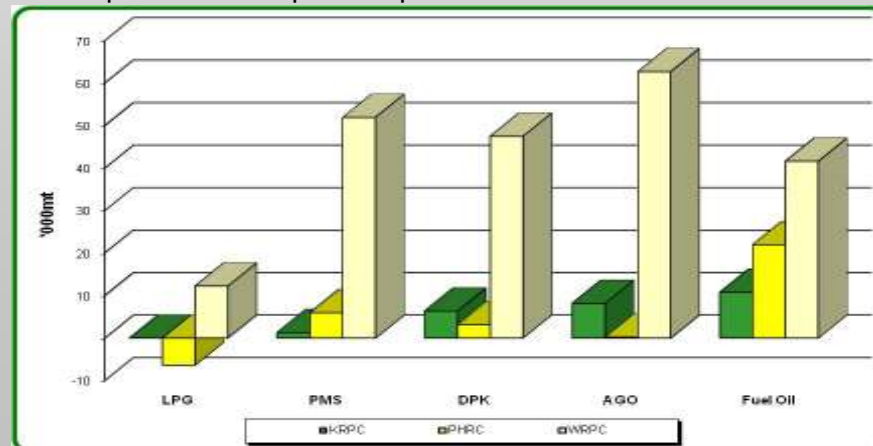
Refinery % Capacity Utilization: April, 2011

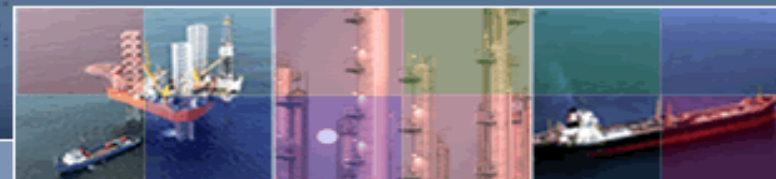


Crude Oil Receipt Vs Crude Oil Processed: April, 2011



4.2 Production Returns: Total national domestic refining produced 385 thousand mt of finished and intermediate products. PPMC which lifts products from the refineries evacuated 288 thousand mt of products. The chart below captures the comparative products contribution of the refineries.





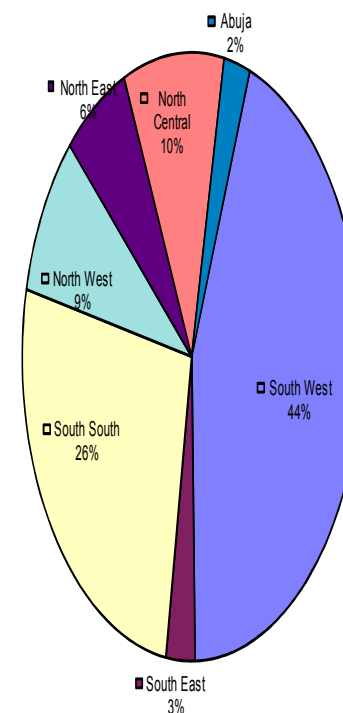
4.3 Refinery Fuel and Loss: Altogether 37,026 mt of products was used by the three (3) refineries as fuel and loss. Consumption as fuel was 7.00% while loss and flare accounted for 0.90% of production. Table 11.0 shows the breakdown by refinery.

5.0 DOMESTIC PETROLEUM PRODUCTS DISTRIBUTION

The Major and Independent Petroleum Products Marketing Companies distributed about 534.33 million litres of various petroleum products in the 36 States and FCT in March 2011 (Tables 12.0 and 13.0). This shows a decrease of 192.10 million litres or 26.44% when compared with the total volume distributed in March 2011 (726.43 million litres). The Major Petroleum Products Marketing Companies distributed 252.65 million litres (47.58% of the total sales) of petroleum products, while the independent Marketing Companies distributed the remaining 281.68 million litres (52.72%).

Distribution by product shows, Premium Motor Spirit (PMS) had the highest figure of 420.06 million litres (78.61%) of the total reflecting average daily sales of 14.00 million litres. This was followed by Automotive Gas Oil (AGO) with total sales figure of 51.51 million litres (9.64%) averaging 1.72 million litres per day. Household Kerosene (HHK) came third in the petroleum products distribution slate with total figure 41.08 of million litres (7.69%) giving an average daily figure of 1.37 million litres. Aviation Turbine Kerosene (ATK) came fourth in the petroleum products distribution slate with total figure of 13.28 million litres (2.49%) giving an average daily figure of 0.44 million litres. Low Pour Fuel (LPFO), Liquefied Petroleum Gas (LPG), Lubricating Oils, Brake fluids as well as Others constituted the remaining part of the distribution.

Zonal Consumption



Note: No report from Conoil, Mobil, Total, Oando & MRS as at the time of this report.



Nigerian National Petroleum Corporation

We touch your lives in many positive ways...



DOWNSTREAM: 2011 APRIL HIGHLIGHT OF ACTIVITIES

Crude Oil Stock Level

	Opening Stock		Quantity Received		Quantity Processed		Closing Stock	
	MT	Barrels	MT	Barrels	MT	Barrels	MT	Barrels
KRPC	57,005	417,059	118,402	870,184	142,010	878,231	33,397	409,011
PHRC	-	-	-	-	-	-	-	-
WRPC	88,448	644,997	363,154	2,668,964	296,893	2,181,985	154,709	1,131,976
TOTAL	145,453	1,062,056	481,556	3,539,148	438,903	3,060,217	188,106	1,540,987

Product Stock Level

	Initial Stock(MT)				Production(MT)				Evacuation (MT)				Final Stock (MT)			
	PMS	DPK	AGO	FUEL OIL	PMS	DPK	AGO	FUEL OIL	PMS	DPK	AGO	FUEL OIL	PMS	DPK	AGO	FUEL OIL
KRPC	48,630	8,607	7,776	16,707	39,139	18,208	48,864	4,168	45,870	15,331	45,454	6,127	41,899	11,484	11,186	14,748
PHRC	21,779	6,182	8,485	60,266	4,403	6	(57)	(4,082)	52,192	-	85	-	(26,010)	6,188	8,343	56,184
WRPC	42,070	27,161	38,989	20,068	65,786	43,395	67,839	57,640	58,200	27,523	66,743	51,966	49,656	43,033	40,085	25,742
NATIONAL	112,479	41,950	55,250	97,041	109,328	61,609	116,646	57,726	156,262	42,854	112,282	58,093	65,545	60,705	59,614	96,674





Nigerian National Petroleum Corporation

We touch your lives in many positive ways...



DOWNSTREAM: 2011 APRIL HIGHLIGHT OF ACTIVITIES

Distribution of Petroleum Products by Companies

COMPANIES	PRODUCTS '000Litres			
	PMS	DPK	AGO	FUEL OIL
African Petroleum	145,719.78	3,520.87	15,041.06	-
Conoil	45,620.60	8,501.99	3,119.30	-
Mobil	59,251.00	531.00	833.00	-
Texaco	-	-	-	-
Total	-	-	-	-
Oando	-	-	-	-
NNPC Retail	46,184.06	3,370.62	5,947.35	-
Major Marketers	296,775.44	15,924.47	24,940.70	-
Independent Marketers	293,526.21	37,863.77	41,700.80	1,419.01
TOTAL	590,301.65	53,788.25	66,641.51	1,419.01

Distribution of Petroleum Products by State

STATE	PRODUCTS '000Litres			
	PMS	DPK	AGO	FUEL OIL
ABIA	4,009.77	39.65	1,153.06	-
ADAMAWA	4,676.55	98.57	240.15	-
AKWA IBOM	3,374.18	78.28	349.65	-
ANAMBRA	2,549.53	42.78	184.00	-
BAUCHI	5,697.52	84.73	345.88	-
BAYELSA	1,695.72	33.77	548.06	-
BENUE	2,377.31	82.20	121.73	-
BARNO	3,456.25	120.45	257.16	-
CROSS RIVER	4,079.50	476.42	89.99	-
DELTA	8,678.15	1,759.38	3,563.66	-
EBONYI	20,669.15	54.09	281.05	-
EDO	3,753.91	801.26	1,157.76	-
EKITI	3,670.83	171.52	72.32	-
ENUGU	4,439.68	83.53	139.69	-
GOMBE	2,234.75	79.41	254.39	-
IMO	2,668.89	57.44	124.23	-
JIGAWA	5,903.37	74.10	193.65	-
KADUNA	7,414.22	2,165.21	3,654.79	-
KANO	6,792.41	754.90	1,121.13	-
KATSINA	10,709.72	164.44	549.13	-
KEBBI	3,859.55	215.03	139.44	-
KOGI	5,113.65	359.51	222.02	-
KWARA	3,058.78	216.61	361.74	-
LAGOS	72,266.42	4,127.91	1,611.82	-
NASARAWA	2,429.13	388.04	214.90	-
NIGER	6,409.19	402.21	329.20	-
OGUN	7,436.94	491.11	293.04	-
ONDO	8,826.95	77.31	175.30	-
OSUN	9,870.65	119.82	227.01	-
OYO	11,569.67	155.63	603.24	-
PLATEAU	3,867.55	105.50	285.75	-
RIVERS	14,834.47	81.65	4,253.61	-
SOKOTO	2,827.09	60.18	215.56	-
TARABA	1,634.69	45.71	130.53	-
YOBE	3,772.22	114.76	199.61	-
ZAMFARA	2,981.54	98.57	34.56	-
FCT	27,165.57	1,642.82	1,241.91	-
Independent Marketers	293,526.21	37,863.77	41,700.80	1,419.01
TOTAL	590,301.65	53,788.25	66,641.51	1,419.01

Distribution of Petroleum Products by Zone

ZONES	PRODUCTS '000Litres			
	PMS	DPK	AGO	FUEL OIL
South West	338,410.15	13,876.38	5,585.68	-
South East	34,337.02	277.49	1,882.04	-
South South	96,604.93	21,249.20	30,351.76	1,419.01
North West	33,073.68	1,367.21	2,253.48	-
North East	21,471.99	543.63	1,427.71	-
North Cental	39,238.33	14,831.53	23,898.92	-
FCT	27,165.57	1,642.82	1,241.91	-
TOTAL	590,301.65	53,788.25	66,641.51	1,419.01





GLOSSARY OF TERMS

AENR	Agip Energy and Natural Resources	N/A	Not Available
AF	Alternative Funding	NAFCON	National Fertilizer Company of Nigeria
AGO	Automotive Gas Oil	NAOC	Nigeria Agip Oil Company
API	American Petroleum Institute	NGC	Nigerian Gas Company
ATK	Aviation Turbine Kerosine	NGL	Natural Gas Liquids
bbls	Barrels	NNPC	Nigerian National Petroleum Corporation
Bscf	Billion Standard Cubic Feet	NPDC	Nigerian Petroleum Development Company
BTU	British Thermal Unit	OML	Oil Mining Lease
C ₃	Propane	OPL	Oil Prospecting Licence
C ₄	Butane	Petrochem.	Petrochemical Products
COMD	Crude Oil Marketing Division	Pet. Jelly	Petroleum Jelly
DPK	Dual Purpose Kerosine	PHRC	Port Harcourt Refining Company
EPCL	Eleme Petrochemical & Company Limited	PMS	Premium Motor Spirit
HHK	House Hold Kerosine	PPMC	Pipelines and Products Marketing Company Ltd
HPFO	High Poor Fuel Oil	PSC	Production Sharing Contract
JVC	Joint Venture Company	R/Fuel	Refinery Fuel
KRPC	Kaduna Refining and Petrochemical Company	W/o	Work over
LPFO	Low Pour Fuel Oil	WRPC	Warri Refining and Petrochemical Company
LPG	Liquified Petroleum Gas	MD	Measured Depth
M ³	Cubic Metres	TVD	True Vertical Depth
mbbls	Million Barrels	SCF	Standard Cubic Feet
mmscf	Million Standard Cubic Feet	HOG	High Octane Gasoline
mmbopd	Million Barrels Per Day	MPNU	Mobil Producing Nigeria Unlimited
mscf	Thousand Standard Cubic feet		

